



## **Pivot Entrance Door Installation Instructions**

**IMPORTANT:** Read complete instructions before beginning installation.

The installation of our pivot entrance door requires a working knowledge and experience in the use of tools and methods necessary for the installation of wood doors. This includes the practice of preparing an opening, anchorage in accordance with product approvals, waterproofing, caulking and sealing, and a basic understanding of pivot hardware and lock components as they relate to wood doors.

Our installation instructions contain a schedule on the frame assembly and a general overview of the frame installation of our pivot entrance door. Reference to our pivot entrance door product approval and separate instructions for pivot hardware installation will be required.



## Description of Frame Components

Always looking from the outside, left side of frame, labeled L, and right side of frame, labeled R. The left and right side of the frame and sill consist of two (2) components. One (1) component for each side of the frame and sill is shipped separate and is to be installed when instructed. Each of the two (2) frame components for the left and right side will include a four (4) to five (5) character label. In these instructions we will only refer to the first four (4) characters.

**NOTE:** We have predrilled anchor holes in the top/head of the frame and sill. Anchor holes in the left and right side of the frame must be drilled in accordance with our pivot entrance door product approval anchor schedule.

## Description of Supplies for Frame Components

### **Flat Head Socket Screws, Countersunk Washers, Threaded Inserts**

In addition to the label of L or R, you will find five (5) flat head socket screws and countersunk washers attached to a threaded insert in the left and right side of the frame. These screws will be used to secure both frame components of the left and right side of the frame together.

### **Neoprene Washers**

We have shipped one neoprene washer for each of the predrilled anchor holes in the sill. These neoprene washers are required to seal the anchor through the sill at the predrilled anchor holes.

### **Anchor Plugs**

We have shipped one anchor plug for each of the predrilled anchor holes in the top/head of the frame. These anchor plugs are to cover the anchor through the top/head of the frame.

### **Polyurethane Drain Tube**

We have shipped a certain amount of polyurethane drain tube if the unit ordered included partial or fully recessed sill installation. This polyurethane drain tube is to be connected to the drain tee fitting attached to the sill.

### **#8 x 1-1/4" Flat Phillips Stainless Steel Screws**

We have shipped one #8 x 1-1/4" flat phillips stainless steel screw for each lock strike plate. These screws are for the top screw hole of each lock strike plate and will further secure both frame components of the left and right side of the frame together.

### **Lip Strike Plate**

We have shipped one lip strike plate if the unit ordered includes MLS 1.

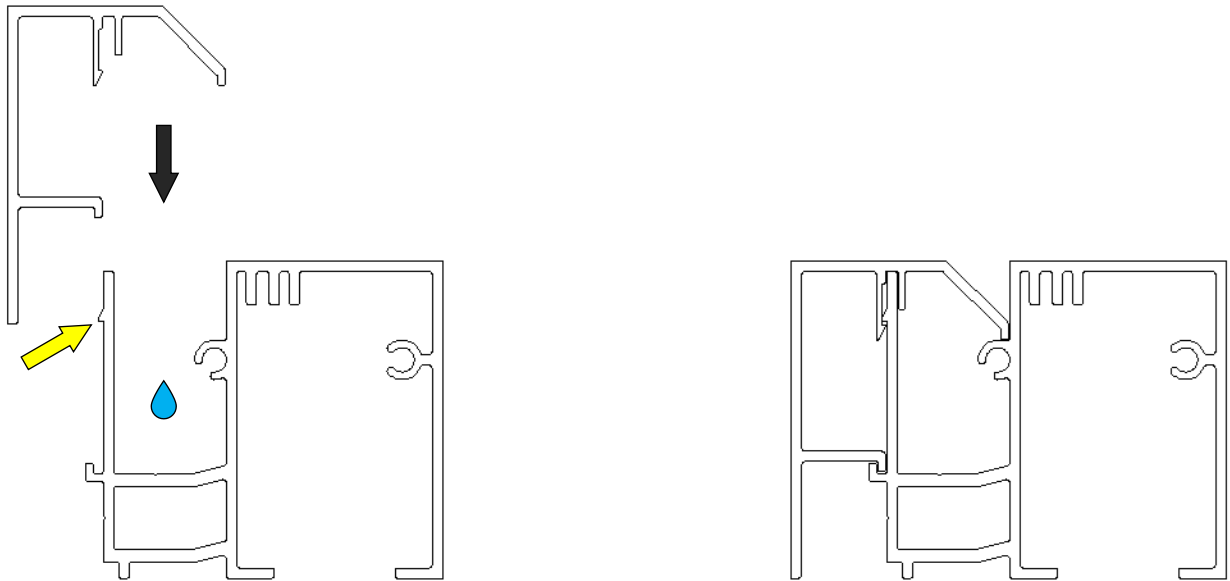
**NOTE:** Not included are anchors, shims, etc. to anchor unit in the opening.

## Description of Pivot Hardware and Lock Components

Most of the pivot hardware and lock components are preinstalled on the door and frame. Components shipped separate include pivot hardware ceiling and floor plate and installation supplies. Confirm whether the unit ordered includes MLS 1 or MLS 2. If MLS 1, the lock cylinder, rosette, handle, and lip strike plate are shipped separate. If MLS 2, the lock handle would be shipped separate if ordered with your unit.

## Step 1

1. Install frame into the opening in accordance with pivot entrance door product approval and the corresponding anchor schedule for the substrate of your opening. Make sure that the frame is level, plumb, and square. Anchor through frame components labeled PEDA and PEDF and predrilled anchor holes in the top/head of the frame and sill. Make sure to use the neoprene washers with anchors through the sill.
2. If the unit ordered includes partial or fully recessed sill installation, then connect the polyurethane drain tube to the open end of the drain tee fitting attached to the sill and run/continue drainage tube to the desired weep out location. Using a cup pour some water into the sill compartment with the water drop in the image below to test the drainage tube connection, anchor seal, and each end of the sill.
3. Install the sill component which was shipped separate from the frame. The application of lubricating oil to the full length of the sill at the point indicated by the yellow arrow may ease the installation of the sill component.

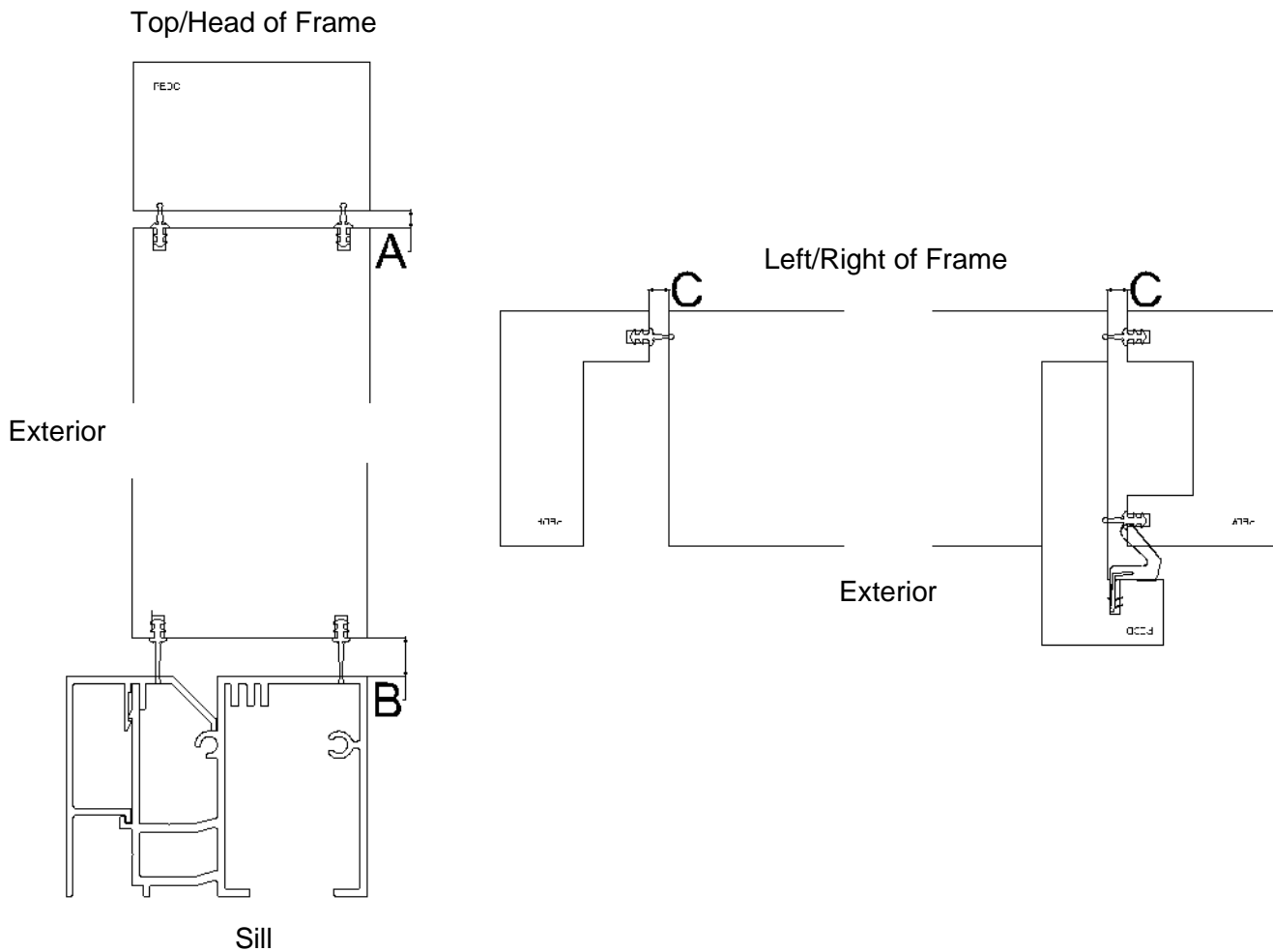




## Step 2

1. Install the door into the frame, refer to the FritsJurgens Mounting Manual included in the shipment. This manual can also be found on the <https://www.fritsjurgens.com/> website, refer to the pivot hinge included with your order.
2. The space/margin around the perimeter of the door should be as indicated for A, B, and C.  
A = 3/16"  
B = 7/16" for System M pivot hinge, 1/2" for System One pivot hinge  
C = 7/32"

**NOTE:** Refer only to letters A, B, and C as they relate to space/margin in the image below. The rotation and frame component layout may not represent the unit you ordered.





## Step 3

1. Install the frame components for the left and right side which were shipped separate from the frame. Remove the flat head socket screws and countersunk washers attached to frame components labeled PEDA and PEDF. Use these screws and washers to install frame component labeled PEDB to PEDA and PEDE to PEDF at the predrilled holes in PEDA and PEDE.
2. Screw through the top hole of each lock strike plate with #8 x 1-1/4" flat phillips stainless steel screws.

## Step 4

1. Install the lock components which were shipped separate. Refer to Description of Pivot Hardware and Lock Components on page 2.

**NOTE:** If the unit ordered includes MLS 1, the lock handle for the multipoint locking system in the pivot stile must be installed with the lock handle pointing toward the sill when the multipoint locking system is engaged/locked. If installed correctly the lock handle will point toward the center of the door when the multipoint locking system is disengaged/unlocked.

Operate and lock our pivot entrance door. Do not force the unit if not operating properly.