

Entry Door Architectural Binder for Residential Applications



**EXCLUSIVE
WOOD DOORS**



**EXCLUSIVE
ARCHITECTURAL**

Table of Contents

Vertical Details

Detail	Door Handing	Jamb	Sill	Sheet #
Entry Door	Outswing	Single Rabbeted Kerfed	Bumper	1
Entry Door	Inswing	Single Rabbeted Kerfed	Weep	2
Entry Door	Inswing	Double Rabbeted Single Kerfed	Adjustable	3
Entry Door and Screen Door	Outswing and Inswing	Double Rabbeted Kerfed	Bumper	4
Sash Sidelite	Outswing	Single Rabbeted	Continuous Bumper	5
Sash Sidelite	Inswing	Single Rabbeted	Continuous Adjustable	6
Sash and Direct Set Sidelite	Universal	Single Rabbeted		7
Sash and Direct Set Transom				8
Sash and Direct Set Transom				9

Table of Contents

Horizontal Details

Detail	Slab Count	Door Handing	Jamb	Sheet #
Entry Door	Single	Universal	Single Rabbeted Kerfed	10
Entry Door	Double	Universal	Single Rabbeted Kerfed	11
Entry Door and Screen Door	Single	Outswing and Inswing	Double Rabbeted Kerfed	12
Entry Door and Screen Door	Double	Outswing and Inswing	Double Rabbeted Kerfed	13
Sash and Direct Set Sidelite				14
Sash and Direct Set Sidelite				15
Sash and Direct Set Sidelite				16



Entry Door Architectural Binder for Residential Applications



**EXCLUSIVE
WOOD DOORS**



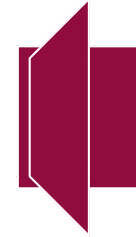
**EXCLUSIVE
ARCHITECTURAL**

Hatch Color Codes	
Requested Wood Species	
Glass	

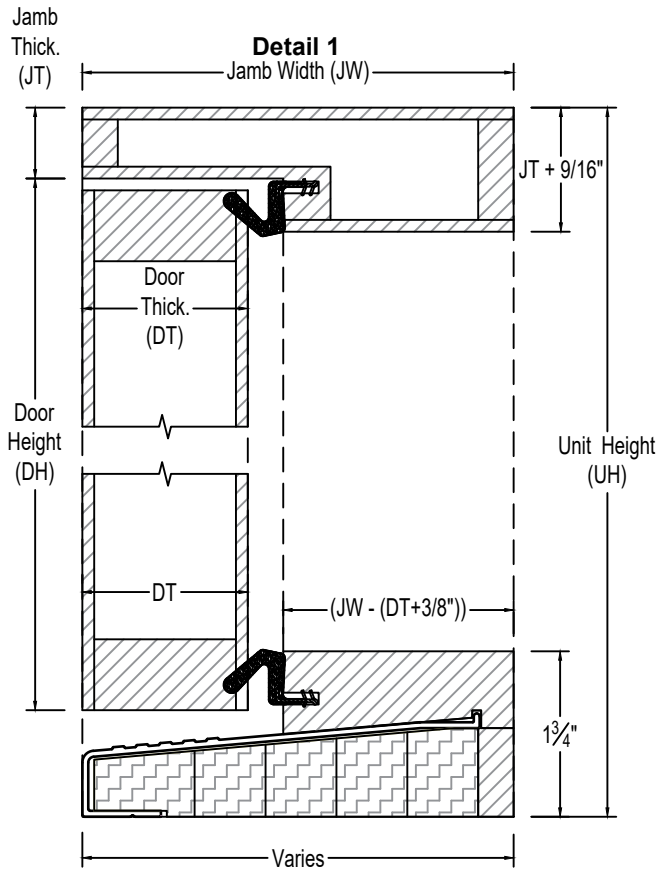
Typical Head and Sill Detail



**EXCLUSIVE
WOOD DOORS**



**EXCLUSIVE
ARCHITECTURAL**



Detail 1	
Detail:	Entry Door
Door Handing:	Outswing
Jamb	Single Rabbeted Kerfed
Sill:	Bumper

Unit Height (UH)
$UH = DH + (JT + 1-1/4")$

Notes
Common Door Thickness (DT) are 1-3/4", 2-1/4", and 2-11/16".
Common Jamb Thickness (JT) are 3/4" and 1" for units including Butt Hinges, and 1-5/8" and 1-13/16" for units including Tectus Concealed Hinges.
Detail 1 can be Wind-Load Resistant and High Velocity Hurricane Zone (HVHZ) Impact-Resistant.

Corresponding Sheets
5, 7, 8, 10, 11, 14, and 16

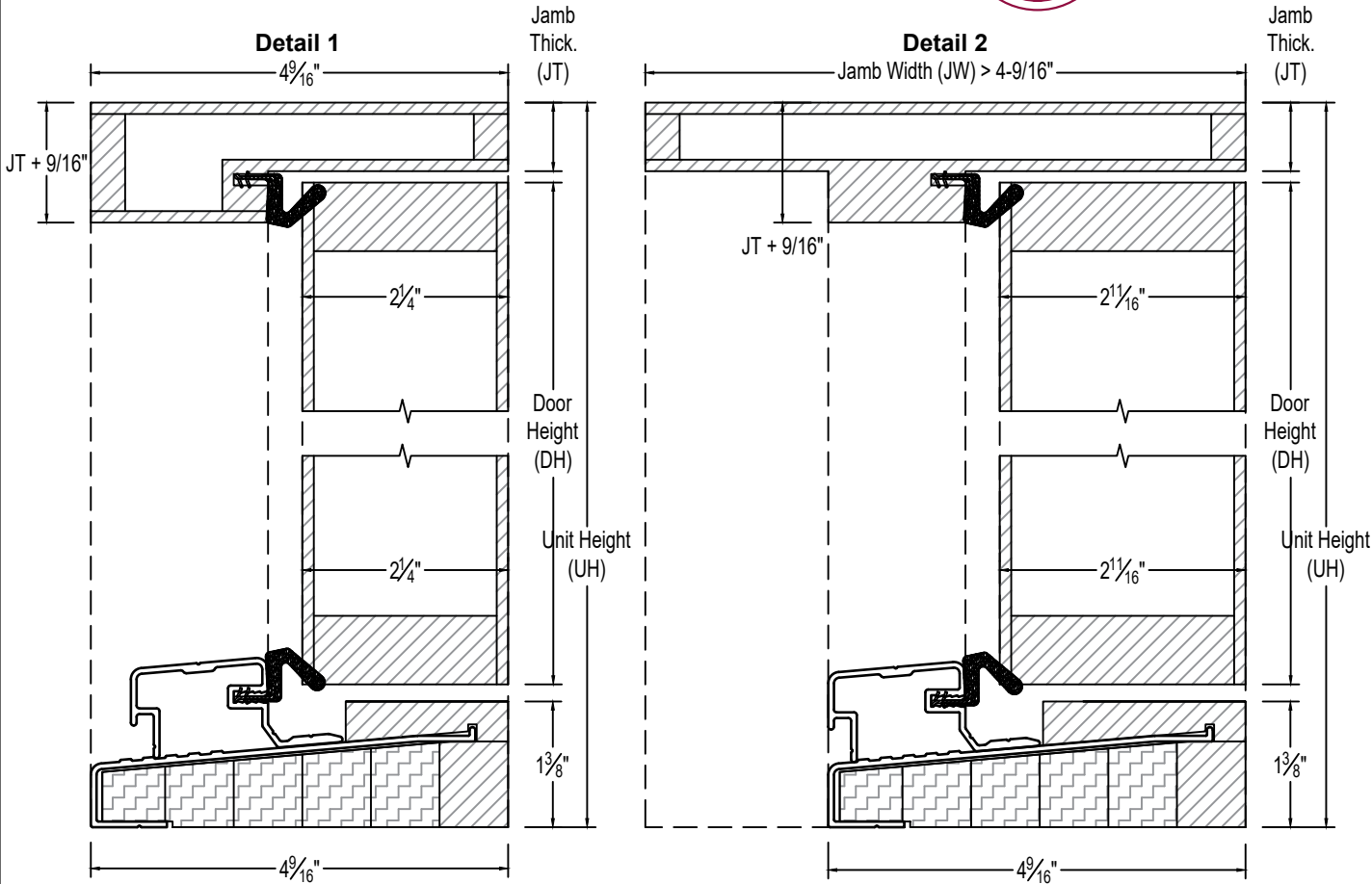
Typical Head and Sill Detail



**EXCLUSIVE
WOOD DOORS**



**EXCLUSIVE
ARCHITECTURAL**



Unit Height (UH)
$UH = DH + (JT + 1-11/16")$

Notes
Required Door Thickness (DT) are 2-1/4", and 2-11/16".
Common Jamb Thickness (JT) are 3/4" and 1" for units including Butt Hinges, and 1-5/8" and 1-13/16" for units including Tectus Concealed Hinges.
Detail 1 and 2 can be Wind-Load Resistant and High Velocity Hurricane Zone (HVHZ) Impact-Resistant.

Corresponding Sheets
7, 9, 10, 11, and 15

Detail 1	
Detail	Entry Door
Door Handing	Inswing
Jamb	Single Rabbeted Kerfed
Sill	Weep
Door Thick.	2-1/4"

Detail 2	
Detail	Entry Door
Door Handing	Inswing
Jamb	Double Rabbeted Single Kerfed
Sill	Weep
Door Thick.	2-11/16"

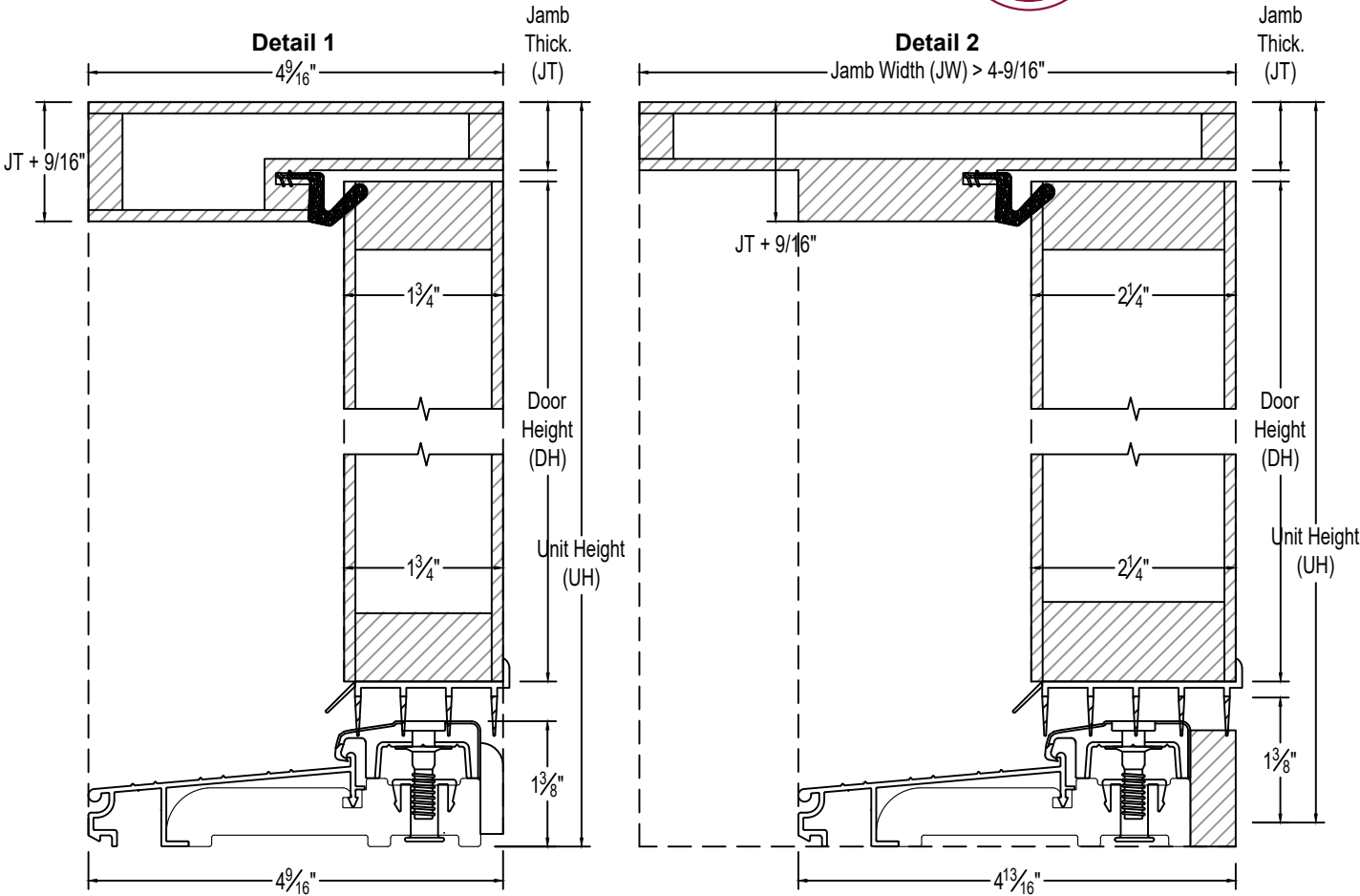
Typical Head and Sill Detail



**EXCLUSIVE
WOOD DOORS**



**EXCLUSIVE
ARCHITECTURAL**



Unit Height (UH)
$UH = DH + (JT + 1-15/16")$

Notes
Required Door Thickness (DT) are 1-3/4", and 2-1/4".
Common Jamb Thickness (JT) are 3/4" and 1" for units including Butt Hinges, and 1-5/8" and 1-13/16" for units including Tectus Concealed Hinges.
Detail 1 and 2 can be Wind-Load Resistant and High Velocity Hurricane Zone (HVHZ) Impact-Resistant.
The Jamb Type in Detail 2 is not required; therefore, Jambs exceeding 4-9/16" may be requested Single Rabbeted Kerfed.
Sill Extensions are available in 3/4", 1-1/4", 2", 3", and 4-3/8".

Corresponding Sheets
6, 7, 8, 9, 10, 11, 15, and 16

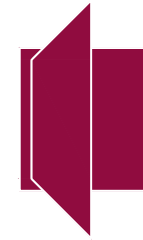
Detail 1	
Detail	Entry Door
Door Handing	Inswing
Jamb	Single Rabbeted Kerfed
Sill	Adjustable
Door Thick.	1-3/4"

Detail 2	
Detail	Entry Door
Door Handing	Inswing
Jamb	Double Rabbeted Single Kerfed
Sill	Adjustable
Door Thick.	2-1/4"

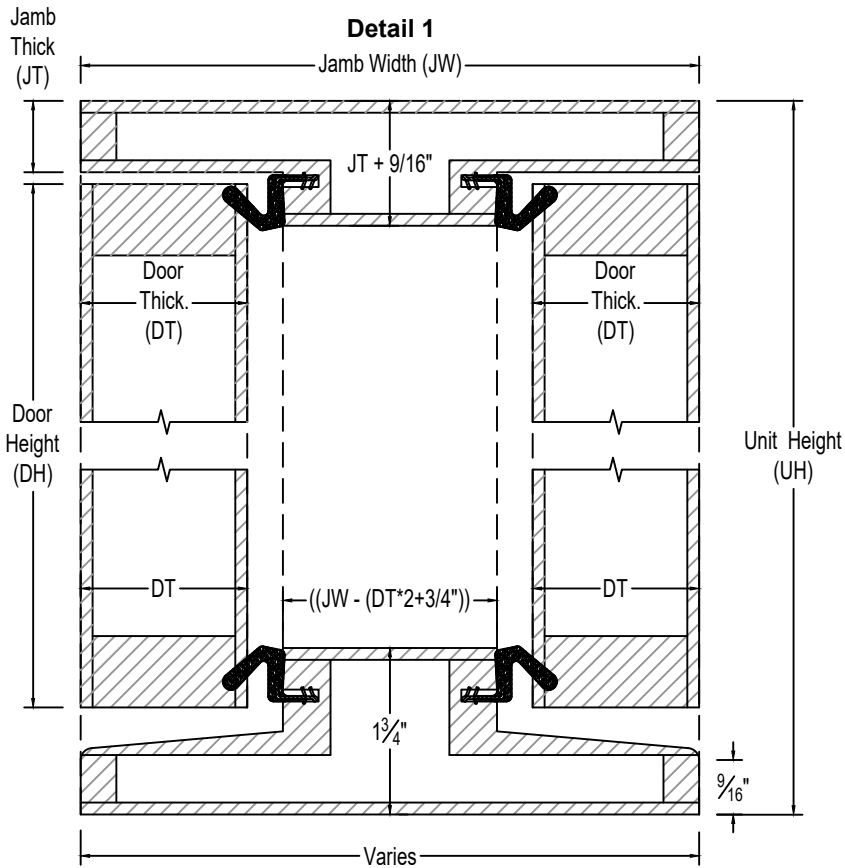
Typical Head and Sill Detail



**EXCLUSIVE
WOOD DOORS**



**EXCLUSIVE
ARCHITECTURAL**



Detail 1	
Detail:	Entry Door
Door Handing:	Outswing and Inswing
Jamb	Double Rabbeted Kerfed
Sill:	Bumper

Unit Height (UH)
$UH = DH + (JT + 1-1/4")$

Notes
Common Door Thickness (DT) are 1-3/4", 2-1/4" and 2-11/16".
Common Jamb Thickness (JT) are 3/4" and 1" for units including Butt Hinges, and 1-5/8" and 1-13/16" for units including Tectus Concealed Hinges.
Detail 1 can be Wind-Load Resistant and High Velocity Hurricane Zone (HVHZ) Impact-Resistant.

Corresponding Sheets
7, 8, 9, 12, 13, 14, and 15

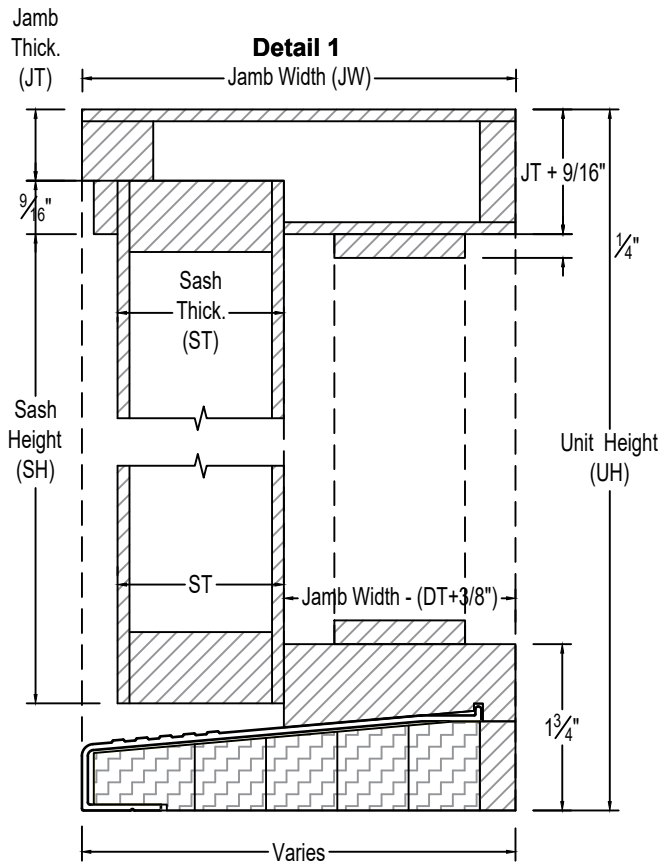
Typical Head and Sill Detail



**EXCLUSIVE
WOOD DOORS**



**EXCLUSIVE
ARCHITECTURAL**



Detail 1	
Detail:	Sash Sidelite
Door Handing:	Outswing
Jamb	Single Rabbeted
Sill:	Continuous Bumper

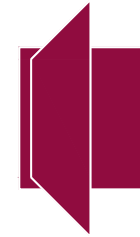
Unit Height (UH)
$UH = DH + (JT + 1-1/4")$

Notes
Common Sidelite Thickness (DT) are 1-3/4", 2-1/4", and 2-11/16".
Common Jamb Thickness (JT) are 3/4" and 1" for units including Butt Hinges, and 1-5/8" and 1-13/16" for units including Tectus Concealed Hinges.

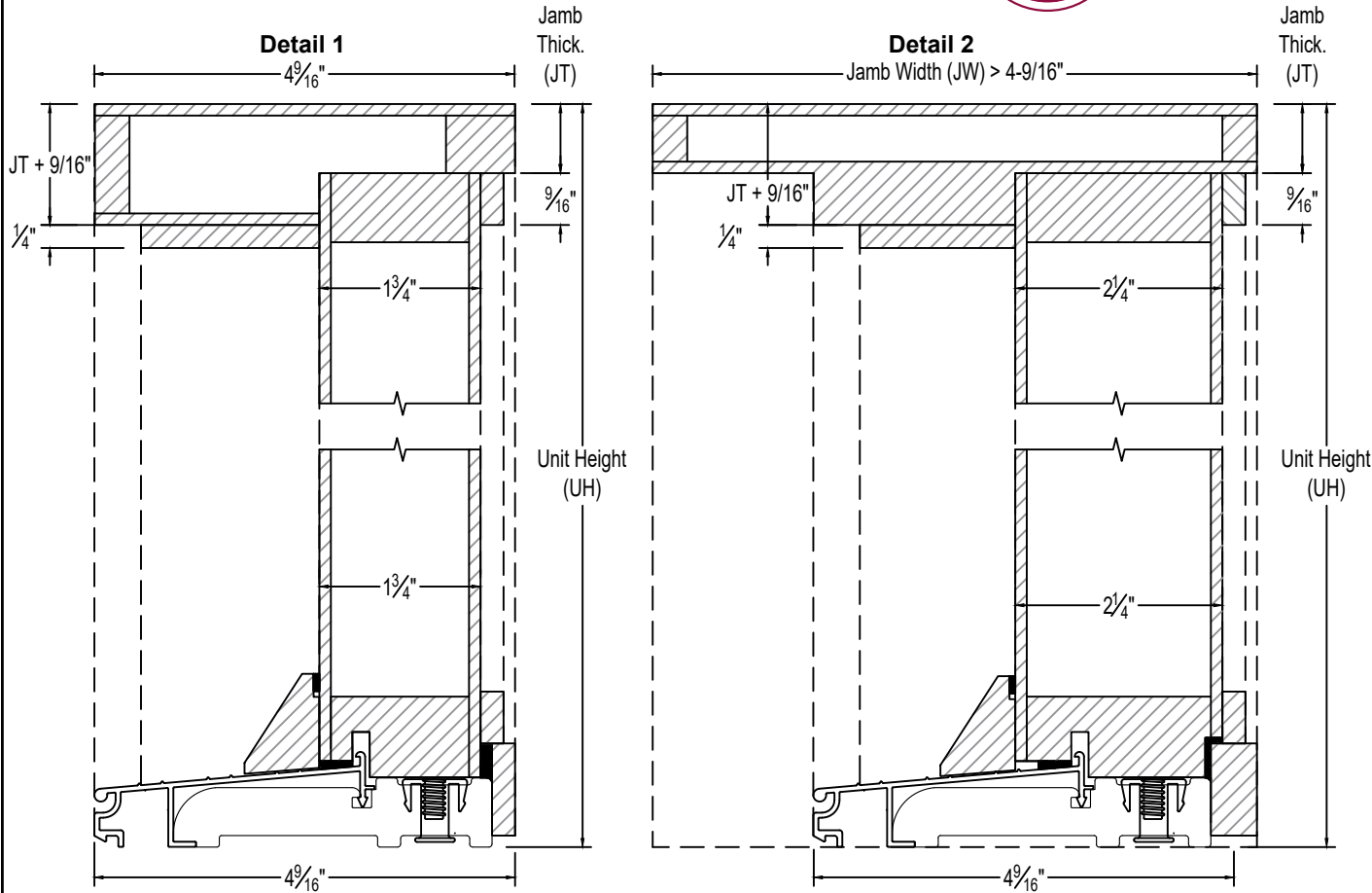
Typical Head and Sill Detail



**EXCLUSIVE
WOOD DOORS**



**EXCLUSIVE
ARCHITECTURAL**



Unit Height (UH)
$UH = DH + (JT + 1-15/16")$

Notes
Required Sidelite Thickness (DT) are 1-3/4", and 2-1/4".
Common Jamb Thickness (JT) are 3/4" and 1" for units including Butt Hinges, and 1-5/8" and 1-13/16" for units including Tectus Concealed Hinges.
The Jamb Type in Detail 2 is not required; therefore, Jambs exceeding 4-9/16" may be requested Single Rabbeted Kerfed.
Sill Extensions are available in 3/4", 1-1/4", 2", 3", and 4-3/8".

Detail 1	
Detail	Sash Sidelite
Door Handing	Inswing
Jamb	Single Rabbeted
Sill	Continuous Adjustable
Door Thick.	1-3/4"

Detail 2	
Detail	Sash Sidelite
Door Handing	Inswing
Jamb	Double Rabbeted
Sill	Continuous Adjustable
Door Thick.	2-1/4"

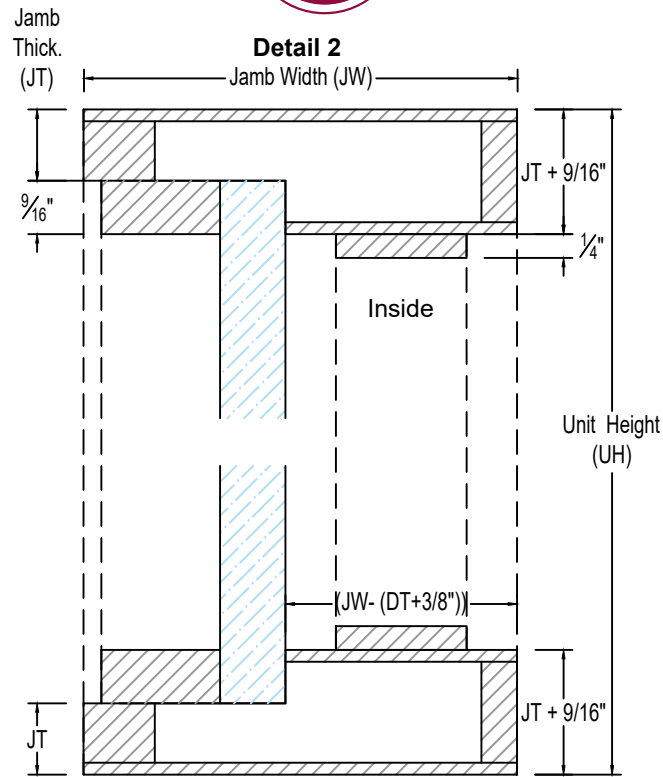
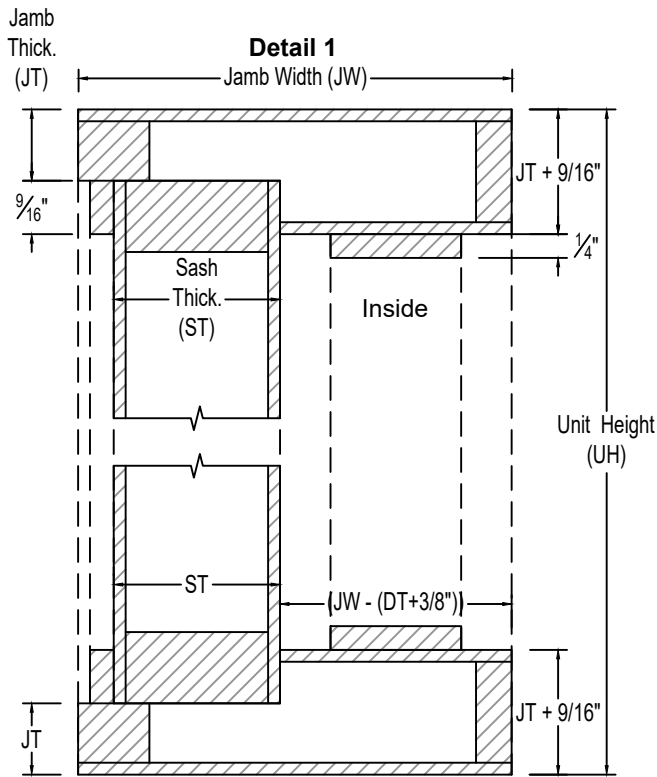
Typical Head and Sill Detail



**EXCLUSIVE
WOOD DOORS**



**EXCLUSIVE
ARCHITECTURAL**



Unit Height (UH)
Varies

Notes
Common Sidelite Thickness (DT) are 1-3/4", 2-1/4", and 2-11/16".
Common Jamb Thickness (JT) are 3/4" and 1" for units including Butt Hinges, and 1-5/8" and 1-13/16" for units including Tectus Concealed Hinges.
Detail 1 and 2 can be Wind-Load Resistant and High Velocity Hurricane Zone (HVHZ) Impact-Resistant.

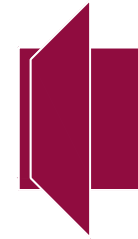
Detail 1	
Detail	Sash Sidelite
Door Handing	Universal
Jamb	Single Rabbeted

Detail 1	
Detail	Direct Set Sidelite
Door Handing	Universal
Jamb	Single Rabbeted

Typical Transom and Mull Detail

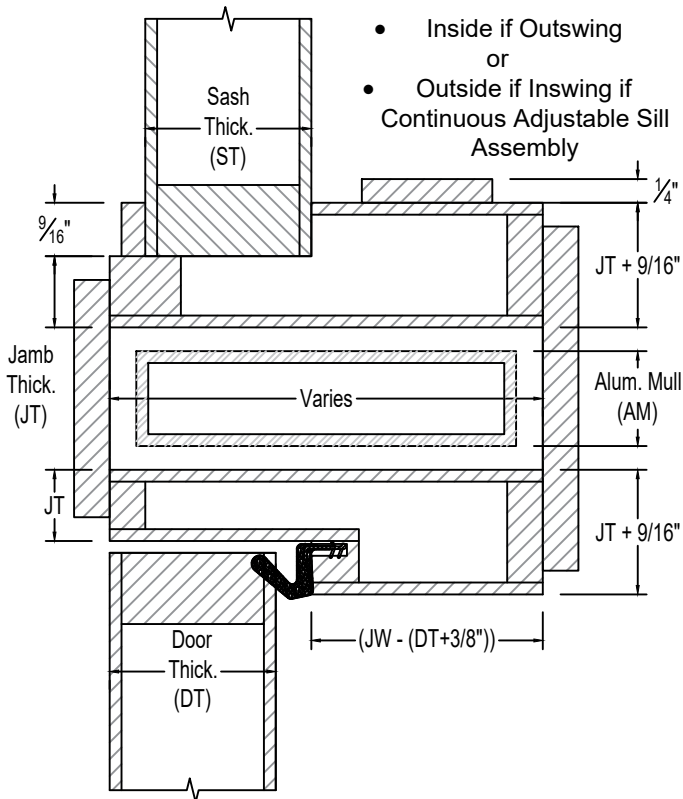


**EXCLUSIVE
WOOD DOORS**

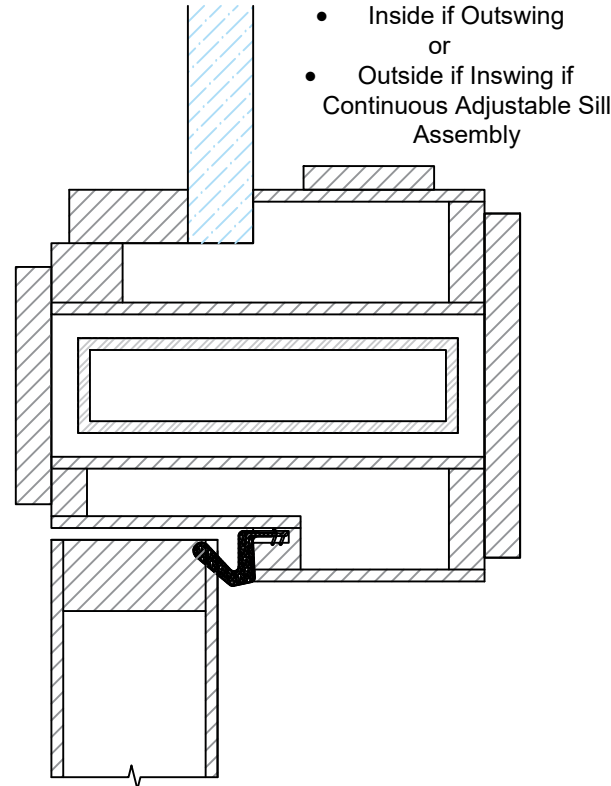


**EXCLUSIVE
ARCHITECTURAL**

Detail 1



Detail 2



Unit Height (UH)
Varies

Notes
Common Aluminum Mull Dimensions are 1" x 4", 1" x 5", 1" x 6", 2" x 4", 2" x 5", 2" x 6", and 2" x 8".
Common Jamb Thickness (JT) are 3/4" and 1" for units including Butt Hinges, and 1-5/8" and 1-13/16" for units including Tectus Concealed Hinges.
Detail 1 and 2 can be Wind-Load Resistant and High Velocity Hurricane Zone (HVHZ) Impact-Resistant.

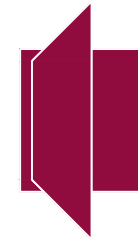
Detail 1	
Detail:	Sash Transom

Detail 1	
Detail:	Direct Set Transom

Typical Transom and Mull Detail

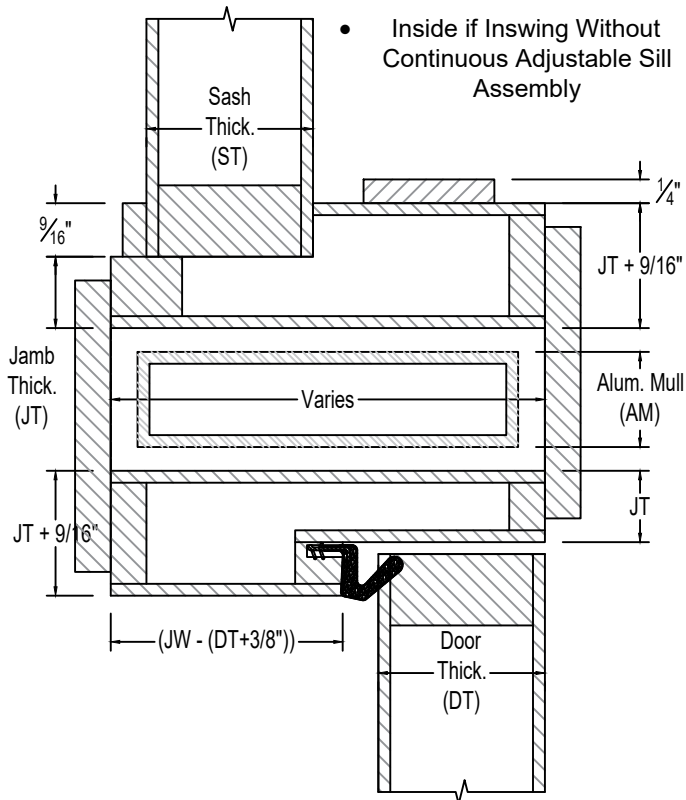


**EXCLUSIVE
WOOD DOORS**

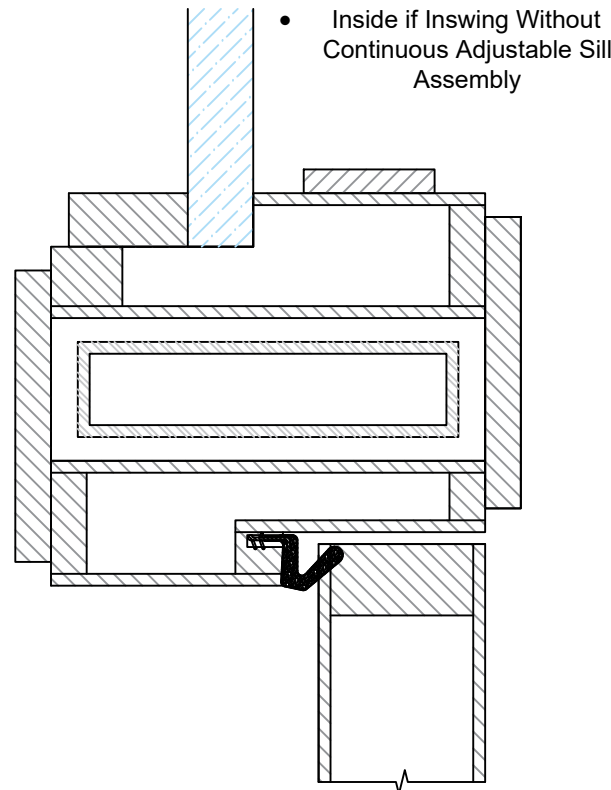


**EXCLUSIVE
ARCHITECTURAL**

Detail 1



Detail 2



Unit Height (UH)
Varies

Notes
Common Aluminum Mull Dimensions are 1" x 4", 1" x 5", 1" x 6", 2" x 4", 2" x 5", 2" x 6", and 2" x 8".
Common Jamb Thickness (JT) are 3/4" and 1" for units including Butt Hinges, and 1-5/8" and 1-13/16" for units including Tectus Concealed Hinges.
Detail 1 and 2 can be Wind-Load Resistant and High Velocity Hurricane Zone (HVHZ) Impact-Resistant.

Detail 1	
Detail:	Sash Transom

Detail 1	
Detail:	Direct Set Transom

Typical Jamb Detail

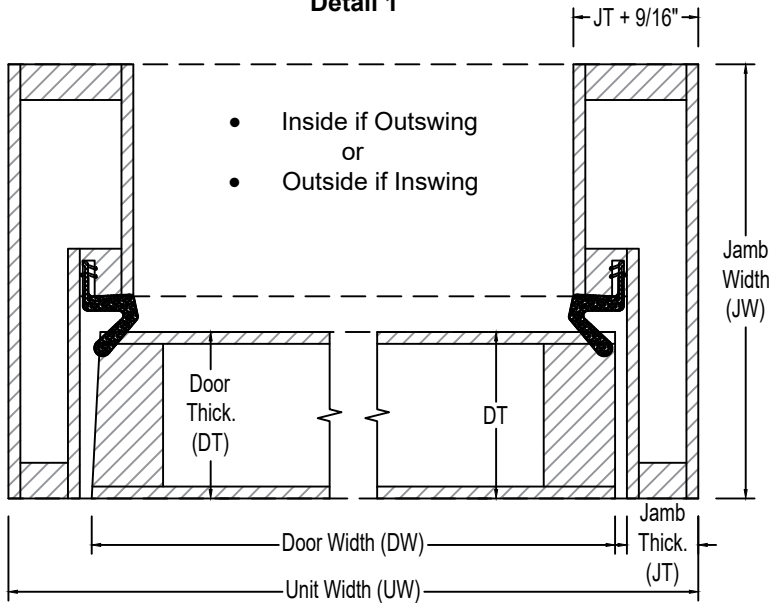


**EXCLUSIVE
WOOD DOORS**



**EXCLUSIVE
ARCHITECTURAL**

Detail 1



Unit Width (UW)
$UW = (DW + ((JT * 2) + 1/4"))$

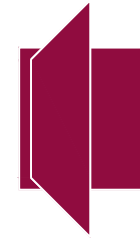
Notes
Common Door Thickness (DT) are 1-3/4", 2-1/4" and 2-11/16". Refer to the applicable Sill Detail and corresponding notes for Door Thickness requirements.
Common Jamb Thickness (JT) are 3/4" and 1" for units including Butt Hinges, and 1-5/8" and 1-13/16" for units including Tectus Concealed Hinges.
Detail 1 can be Wind-Load Resistant and High Velocity Hurricane Zone (HVHZ) Impact-Resistant.

Detail 1	
Detail:	Entry Door
Slab Count:	Single
Door Handing:	Universal
Jamb	Single Rabbeted Kerfed

Typical Jamb and T-Astragal Detail

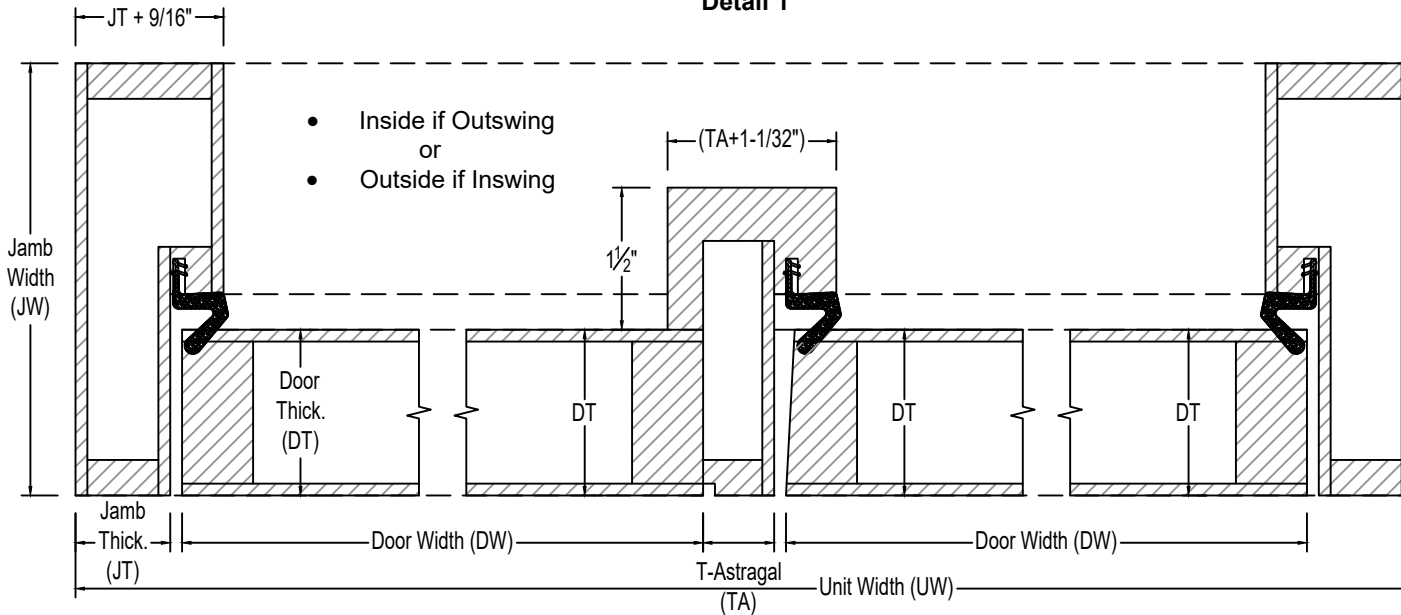


**EXCLUSIVE
WOOD DOORS**



**EXCLUSIVE
ARCHITECTURAL**

Detail 1



- Inside if Outswing or
- Outside if Inswing

Unit Width (UW)
$UW = ((DW*2) + (JT*2) + TA + 3/8")$

Notes
Common Door Thickness (DT) are 1-3/4", 2-1/4" and 2-11/16". Refer to the applicable Sill Detail and corresponding notes for Door Thickness requirements.
Common Jamb Thickness (JT) are 3/4" and 1" for units including Butt Hinges, and 1-5/8" and 1-13/16" for units including Tectus Concealed Hinges.
Common T-Astragal Thickness (TA) are 3/4" for typical locks, and 1" for units including Multipoint Lock Systems.
Detail 1 can be Wind-Load Resistant and High Velocity Hurricane Zone (HVHZ) Impact-Resistant.

Detail 1	
Detail:	Entry Door
Slab Count:	Double
Door Hanging:	Universal
Jamb	Single Rabbeted Kerfed

Typical Jamb Detail

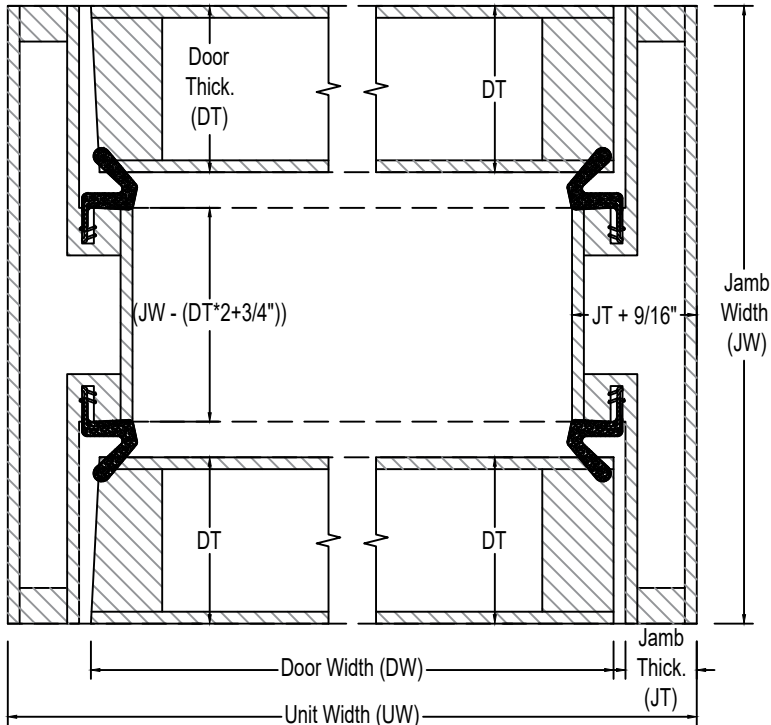


**EXCLUSIVE
WOOD DOORS**



**EXCLUSIVE
ARCHITECTURAL**

Detail 1



Unit Width (UW)
$UW = (DW + ((JT * 2) + 1/4"))$

Notes
Common Door Thickness (DT) are 1-3/4", 2-1/4" and 2-11/16". Refer to the applicable Sill Detail and corresponding notes for Door Thickness requirements.
Common Jamb Thickness (JT) are 3/4" and 1" for units including Butt Hinges, and 1-5/8" and 1-13/16" for units including Tectus Concealed Hinges.
Detail 1 can be Wind-Load Resistant and High Velocity Hurricane Zone (HVHZ) Impact-Resistant.

Detail 1	
Detail:	Entry Door and Screen Door
Slab Count:	Single
Door Handing:	Outswing and Inswing
Jamb	Double Rabbeted Kerfed

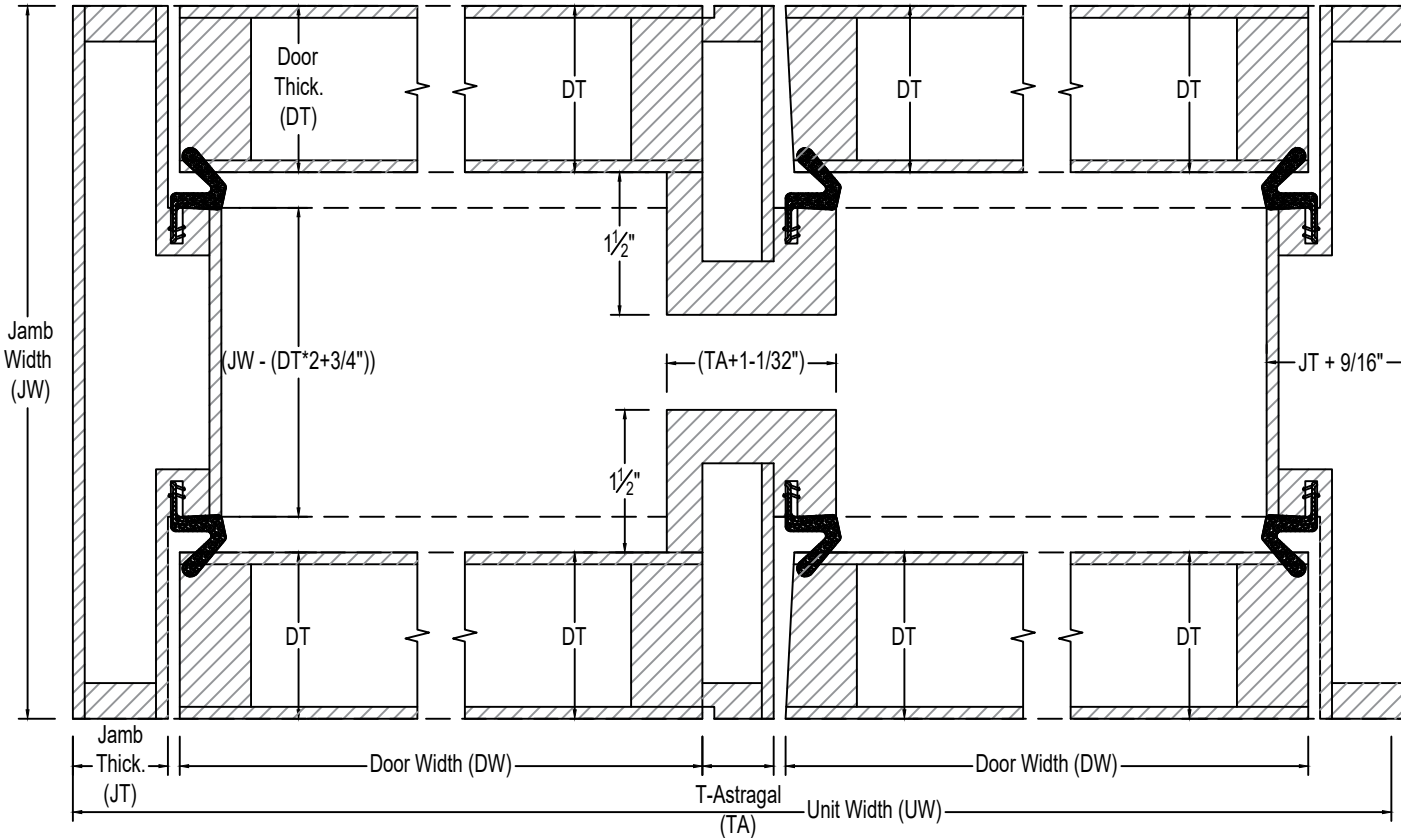
Typical Jamb Detail



**EXCLUSIVE
WOOD DOORS**



**EXCLUSIVE
ARCHITECTURAL**



Unit Width (UW)
$UW = ((DW*2) + (JT*2) + TA + 3/8")$

Notes
Common Door Thickness (DT) are 1-3/4", 2-1/4" and 2-11/16". Refer to the applicable Sill Detail and corresponding notes for Door Thickness requirements.
Common Jamb Thickness (JT) are 3/4" and 1" for units including Butt Hinges, and 1-5/8" and 1-13/16" for units including Tectus Concealed Hinges.
Common T-Astragal Thickness (TA) are 3/4" for typical locks, and 1" for units including Multipoint Lock Systems.
Detail 1 can be Wind-Load Resistant and High Velocity Hurricane Zone (HVHZ) Impact-Resistant.

Detail 1	
Detail:	Entry Door and Screen Door
Slab Count:	Double
Door Handing:	Outswing and Inswing
Jamb	Double Rabbeted Kerfed

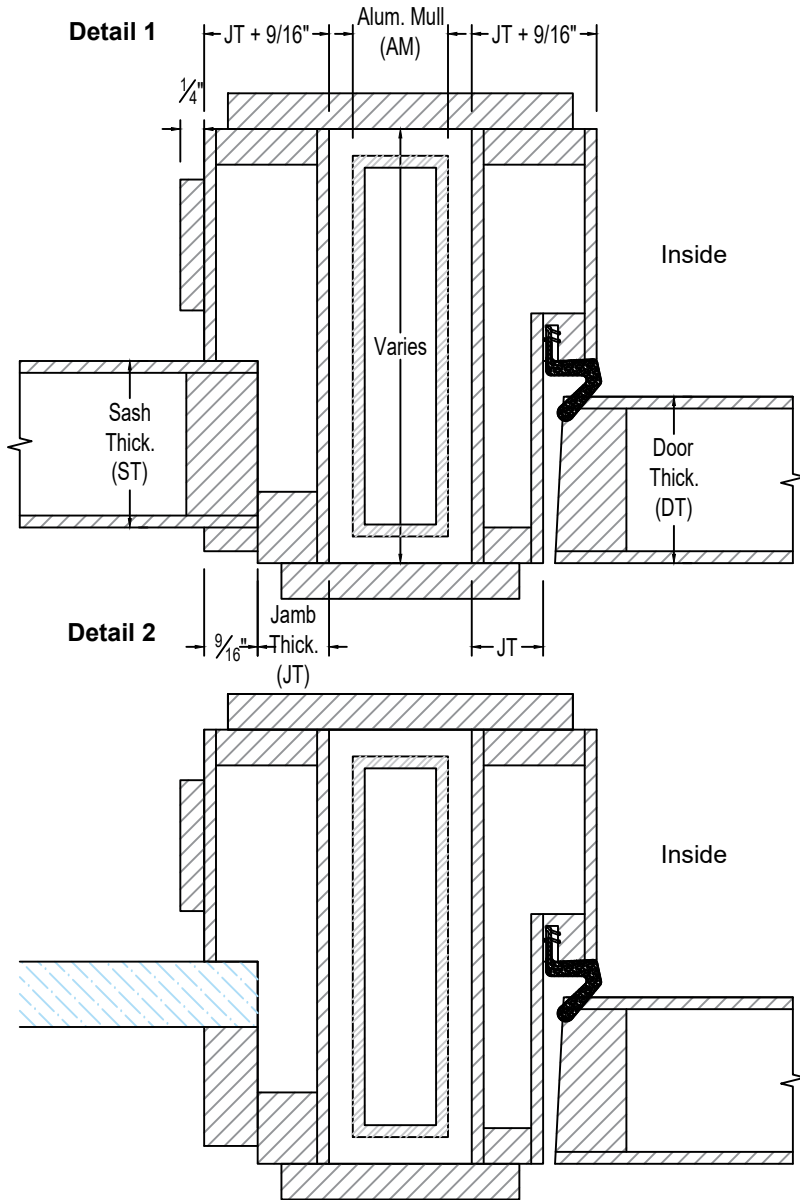
Typical Sidelite and Mull Detail



**EXCLUSIVE
WOOD DOORS**



**EXCLUSIVE
ARCHITECTURAL**



Detail 1	
Detail:	Sash Sidelite

Detail 2	
Detail:	Direct Set Sidelite

Unit Width (UW)
Varies

Notes
Common Door Thickness (DT) are 1-3/4", 2-1/4" and 2-11/16". Refer to the applicable Sill Detail and corresponding notes for Door Thickness requirements.
Common Aluminum Mull Dimensions are 1" x 4", 1" x 5", 1" x 6", 2" x 4", 2" x 5", 2" x 6", and 2" x 8".
Common Jamb Thickness (JT) are 3/4" and 1" for units including Butt Hinges, and 1-5/8" and 1-13/16" for units including Tectus Concealed Hinges.
Detail 1 and 2 can be Wind-Load Resistant and High Velocity Hurricane Zone (HVHZ) Impact-Resistant.

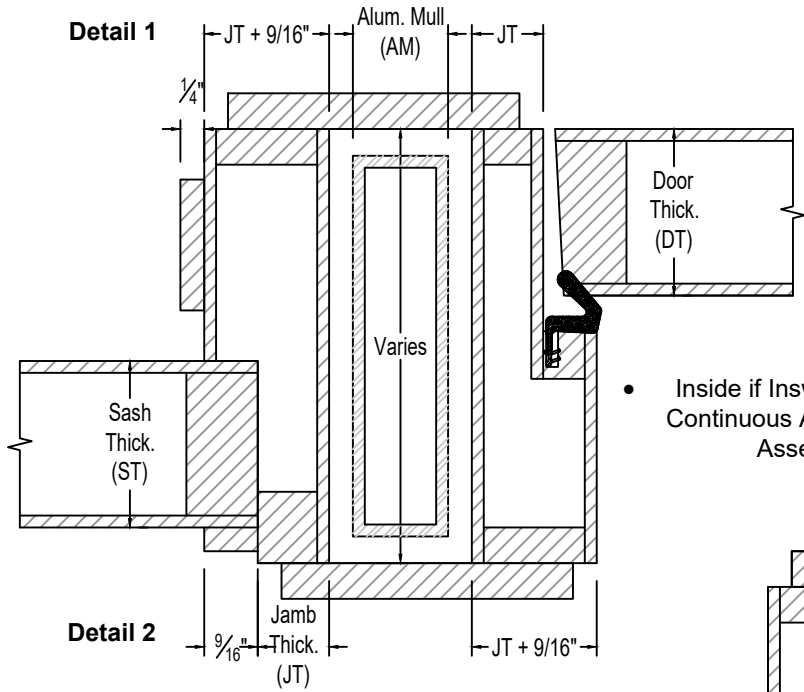
Typical Sidelite and Mull Detail



**EXCLUSIVE
WOOD DOORS**



**EXCLUSIVE
ARCHITECTURAL**



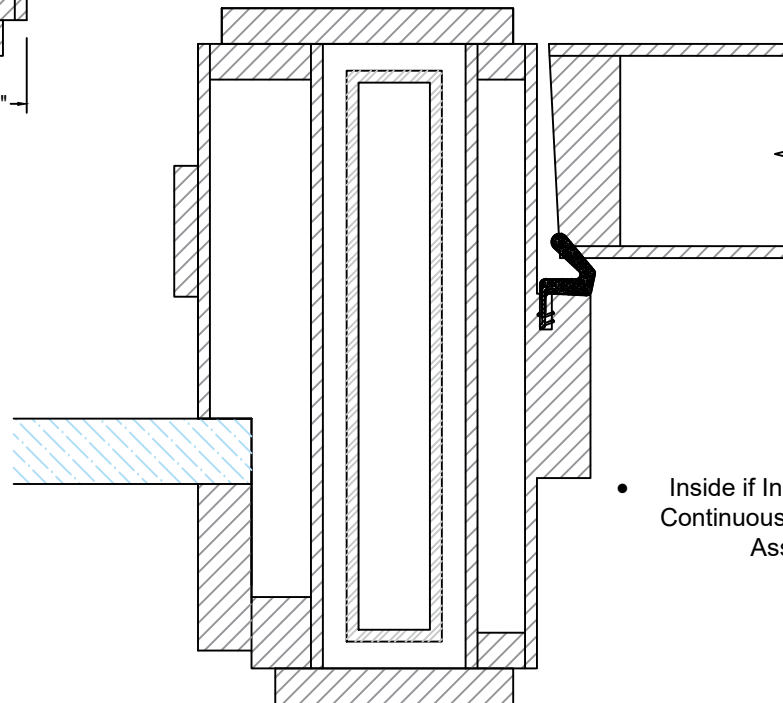
Detail 1	
Detail:	Sash Sidelite

Detail 2	
Detail:	Direct Set Sidelite

Unit Width (UW)
Varies

Notes
Common Door Thickness (DT) are 1-3/4", 2-1/4" and 2-11/16". Refer to the applicable Sill Detail and corresponding notes for Door Thickness requirements.
Common Aluminum Mull Dimensions are 1" x 4", 1" x 5", 1" x 6", 2" x 4", 2" x 5", 2" x 6", and 2" x 8".
Common Jamb Thickness (JT) are 3/4" and 1" for units including Butt Hinges, and 1-5/8" and 1-13/16" for units including Tectus Concealed Hinges.
Detail 1 and 2 can be Wind-Load Resistant and High Velocity Hurricane Zone (HVHZ) Impact-Resistant.
The Jamb Type in Detail 2 is not required; therefore, Jambs exceeding 4-9/16" may be requested Single Rabbeted Kerfed.

- Inside if Inswing Without Continuous Adjustable Sill Assembly



- Inside if Inswing Without Continuous Adjustable Sill Assembly

Typical Sidelite and Mull Detail

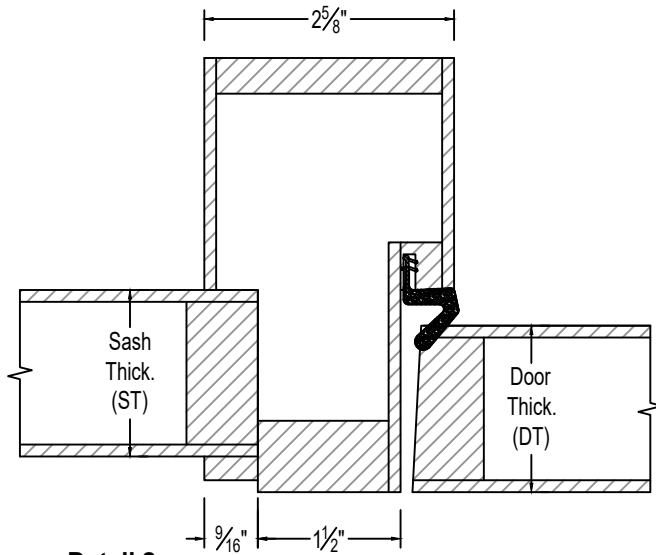


**EXCLUSIVE
WOOD DOORS**

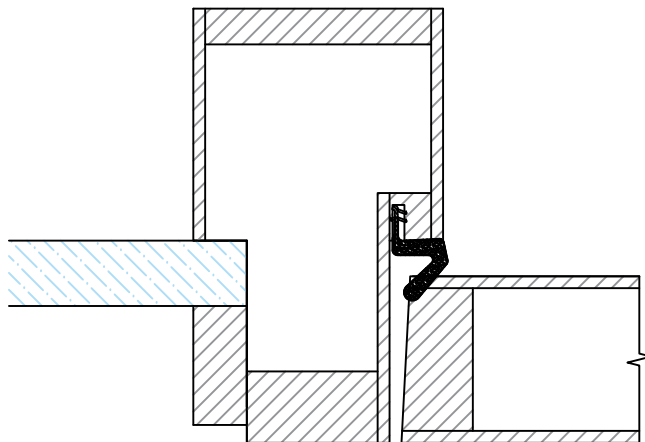


**EXCLUSIVE
ARCHITECTURAL**

Detail 1



Detail 2



Detail 1	
Detail:	Sash Sidelite
Door Hanging:	Universal
Sill	Adjustable Continuous

Detail 2	
Detail:	Direct Set Sidelite
Door Hanging:	Universal
Sill	Adjustable Continuous

Unit Width (UW)
Varies

Notes
Common Door Thickness (DT) are 1-3/4", 2-1/4" and 2-11/16". Refer to the applicable Sill Detail and corresponding notes for Door Thickness requirements.